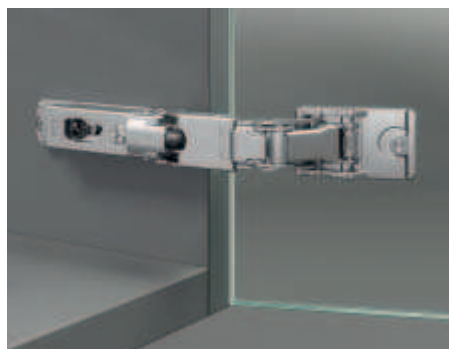


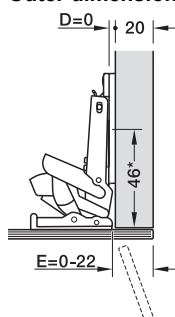
Häfele Duomatic 110°/Push 110°

For glass and mirror doors without glass drilling

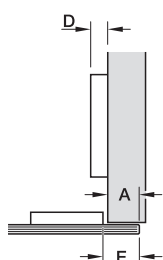


- > Material: Zinc alloy cup, steel hinge arm
- > Finish: Nickel plated
- > Cup fixing: Cup plate for glue fixing to door
- > Installation: Door to cabinet with slide-on system using Duomatic A mounting plates or with quick fixing system using Duomatic SM mounting plates
- > Adjustment facility: Side adjustment from -1.5 to +4.5 mm, height adjustment from -2 to +2 mm, depth adjustment with Duomatic A mounting plates +2.8 mm, with Duomatic SM mounting plates from -0.5 to +2.8 mm
- > With automatic closing spring or opening mechanism (Push, separate spring/push catch required)

Outer dimensions and distances



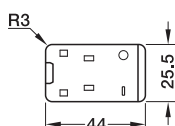
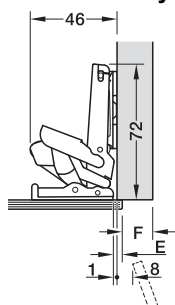
*installation with cruciform mounting plates



Mounting plate distance calculation

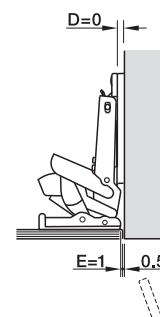
$$D = -1 + E - (A)$$

→ Full overlay mounting

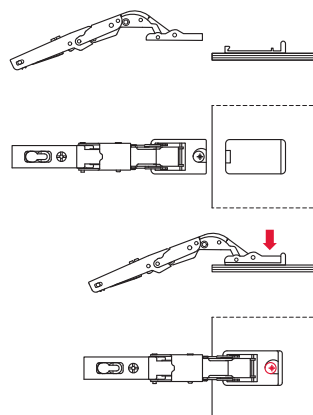


Note

With overlay mounting, the drilling position of the mounting plates must be set back by 9 mm and with inset mounting by 9 mm + glass thickness + 1 mm.



Installation



1) Mount cup plate on the glass or mirror door using suitable adhesive.

2) To mount hinge, position cup on plate and then turn eccentric.

| Door overlay mm | | | | | | | | | | | | | | | | | | | | | |
|----------------------|----|----|----|----|----|----|----|----|----|----|----------------------------|----|----|----|----|---|--|--|--|--|--|
| 6 | 7 | 8 | 9 | 10 | 11 | 12 | 13 | 14 | 15 | 16 | 17 | 18 | 19 | 20 | 21 | | | | | | |
| 7 | 8 | 9 | 10 | 11 | 12 | 13 | 14 | 15 | 16 | 17 | 18 | 19 | 20 | 21 | 22 | 0 | | | | | |
| 10 | 11 | 12 | 13 | 14 | 15 | 16 | 17 | 18 | 19 | 20 | 21 | 22 | | | | | | | | | |
| 13 | 14 | 15 | 16 | 17 | 18 | 19 | 20 | 21 | 22 | | | | | | | | | | | | |
| 16 | 17 | 18 | 19 | 20 | 21 | 22 | | | | | | | | | | | | | | | |
| Distance to cup E mm | | | | | | | | | | | Mounting plate distance mm | | | | | | | | | | |

| Door overlay mm | | | | | | | | | | | | | | | | | | | | | |
|----------------------|----|----|----|----|----|----|----|----|----|----|----------------------------|----|----|----|----|----|---|---|---|---|--|
| -10 | -9 | -8 | -7 | -6 | -5 | -4 | -3 | -2 | -1 | 0 | 1 | 2 | 3 | 4 | 5 | | | | | | |
| | | | | | | | | | | 0 | 1 | 2 | 3 | 4 | 5 | 6 | 0 | | | | |
| | | | | | | | | | | 0 | 1 | 2 | 3 | 4 | 5 | 6 | 7 | 8 | 9 | 3 | |
| | | | | 0 | 1 | 2 | 3 | 4 | 5 | 6 | 7 | 8 | 9 | 10 | 11 | 12 | 6 | | | | |
| 0 | 1 | 2 | 3 | 4 | 5 | 6 | 7 | 8 | 9 | 10 | 11 | 12 | 13 | 14 | 15 | 9 | | | | | |
| Distance to cup E mm | | | | | | | | | | | Mounting plate distance mm | | | | | | | | | | |

| Version | Cat. No. |
|---|------------|
| With automatic opening mechanism (Push) | 329.26.621 |
| Without automatic closing spring | 329.26.622 |
| With automatic closing spring | 329.26.623 |
| With integrated soft closing mechanism | 329.26.625 |

Packing: 1 or 50 pieces

Order reference

Replacement cup plates available on request (minimum order quantity 600 pieces).

| | |
|-------------------------------------|-----------|
| Glass gluing technique | ► FF 13.5 |
| Mounting plates and accessories | ► FF 4.42 |
| Push opening aid | ► FF 4.52 |
| Smove soft closing system for doors | ► FF 4.56 |